



**WORLD LEADERS  
IN BOLUS  
TECHNOLOGY**

# PRODUCT GUIDE





## ABOUT US...

**AGRIMIN LTD.** specialises in developing, manufacturing and marketing controlled and sustained release trace element, vitamin and mineral boluses for ruminants. The company has gained a reputation for technically advanced products, many of which have been developed in house and researched extensively in New Zealand.

Our bolus products are sold throughout the UK by the animal health supply trade and by veterinary surgeons. We have established significant export markets throughout Europe and in other developed agricultural economies. Farmers in countries as diverse as Iceland, New Zealand, Ireland and Mexico are recognising the benefits our boluses can bring to their livestock.

## AGRIMIN BOLUSES

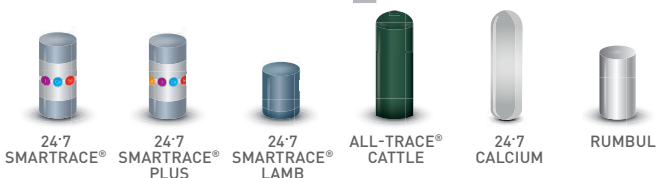
Helping you ...make the **right choice**  
...at the **right time** ...for the **right animal!**



# CONTROLLED & SUSTAINED RELEASE BOLUS TECHNOLOGY

Our bolus range encompasses different technologies, all of which are designed to deliver a controlled quantity of nutrients to an individual animal over a defined period of time.

All of our boluses are designed to dissolve completely, leaving the reticulum free of any bolus residue.



## THE BENEFITS OF BOLUSES

Farmers use boluses for a number of reasons:

**CERTAIN SUPPLY** - with our boluses, you know that each animal is receiving a consistent supply of nutrients. Variation of intake is a major issue with free access supplementation.

**SUSTAINED RELEASE** - our boluses give a genuinely sustained supply of nutrients, ensuring that animals are receiving supplementation every minute of every day of the active life of the product.

**LABOUR SAVING** - once administered, our boluses save the time and cost put into daily feeding or checking the availability of free access products.

**COST EFFECTIVE** - there is no waste with our boluses and costs compare very favourably with other forms of supplementation.



# TRACE ELEMENT BOLUSES FOR CALVES

## DESCRIPTION

A sustained release bolus containing copper, iodine, cobalt and selenium. Intended for ruminating calves over 6 weeks of age with a liveweight of 100-200 kg, on grass or forage-based diets.

**24-7 SMARTRACE® PLUS CALF** is designed for situations where iodine, cobalt and selenium supplementation is essential over the growing period and where additional copper is required.

**24-7 SMARTRACE® PLUS CALF** supplies the animal's full daily requirement of each essential trace element for 180 days.

ACTIVE COMPONENT	AVERAGE DAILY SUPPLY OVER 180 DAYS FROM 58 g BOLUS
Copper	46.7 mg
Iodine	4.2 mg
Cobalt	0.8 mg
Selenium	0.4 mg

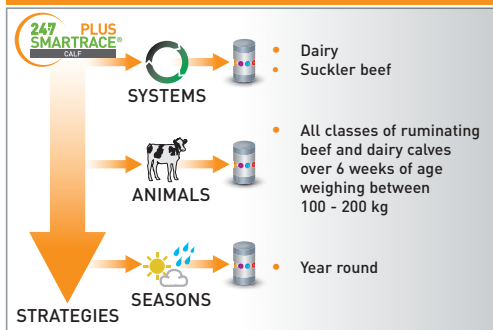
## BENEFITS

- Eroding technology means consistent supply of trace elements
- Delivers full daily requirement of copper, iodine, cobalt and selenium
- Optimise growth rates
- Helps maintain condition
- Contains no GMOs or material of animal origin
- Active life 180 days

## ADMINISTRATION

- **One 58 g bolus should be given to each animal**
- **Always use the approved Agrimin cattle bolus applicator B**
- **Pack size - 20 boluses**

## WHEN TO USE AGRIMIN 24-7 SMARTRACE® PLUS





# TRACE ELEMENT BOLUSES FOR GROWING CATTLE

## DESCRIPTION

A sustained release bolus containing iodine, cobalt and selenium. Intended for growing cattle on grass or forage based diets with a liveweight of 200-400 kg.

**24-7 SMARTRACE® GROWING CATTLE** is designed for situations where iodine, cobalt and selenium supplementation is essential for efficient growth, optimum health and fertility but where additional copper is not required.

**24-7 SMARTRACE® GROWING CATTLE** supplies the animal's full daily requirement of each essential trace element for 180 days.

ACTIVE COMPONENT	AVERAGE DAILY SUPPLY OVER 180 DAYS FROM 130 g BOLUS
Iodine	18.7 mg
Cobalt	2.2 mg
Selenium	1.0 mg

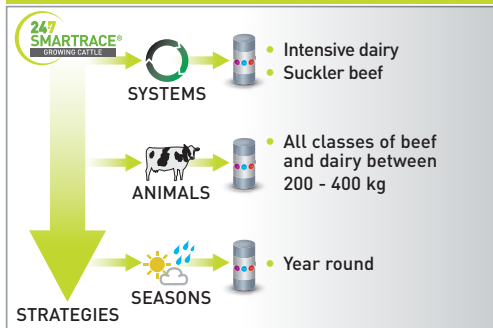
## BENEFITS

- Eroding technology means consistent supply of trace elements
- Delivers full daily requirement of iodine, cobalt and selenium
- Free of copper – important for closely managed dairy cows
- Contains no GMOs or material of animal origin
- Active life 180 days

## ADMINISTRATION

- One 130 g bolus should be given to each animal
- Always use the approved Agrimin cattle bolus applicator A
- Pack size - 10 boluses

## WHEN TO USE AGRIMIN 24-7 SMARTRACE®



# TRACE ELEMENT BOLUSES FOR GROWING CATTLE

## DESCRIPTION

A sustained release bolus containing copper, iodine, cobalt and selenium. Intended for growing cattle on grass or forage based diets with a liveweight of 200-400 kg.

**24-7 SMARTRACE® PLUS GROWING CATTLE** is designed for situations where iodine, cobalt and selenium supplementation is essential for efficient growth, optimum health and fertility and where additional copper is required.

**24-7 SMARTRACE® PLUS GROWING CATTLE** supplies the animal's full daily requirement of each essential trace element for 180 days.

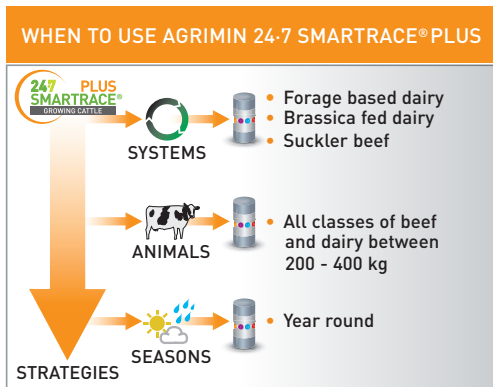
ACTIVE COMPONENT	AVERAGE DAILY SUPPLY OVER 180 DAYS FROM 150 g BOLUS
Copper	93.3 mg
Iodine	18.7 mg
Cobalt	2.2 mg
Selenium	1.0 mg

## BENEFITS

- Eroding technology means consistent supply of trace elements
- Delivers full daily requirement of copper, iodine, cobalt and selenium
- Contains no GMOs or material of animal origin
- Active life 180 days

## ADMINISTRATION

- **One 150 g bolus should be given to each animal**
- **Always use the approved Agrimin cattle bolus applicator A**
- **Pack size - 10 boluses**



# TRACE ELEMENT BOLUSES FOR ADULT CATTLE

## DESCRIPTION

A sustained release bolus containing iodine, cobalt and selenium. Intended for adult cattle on grass or forage based diets with a liveweight over 400 kg.

**24-7 SMARTRACE® ADULT CATTLE** is designed for situations where iodine, cobalt and selenium supplementation is essential in the run up to calving and service where additional copper is not required.

**24-7 SMARTRACE® ADULT CATTLE** supplies the animal's full daily requirement of each essential trace element for 180 days.

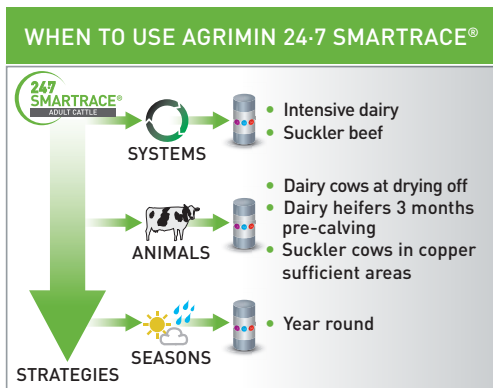
ACTIVE COMPONENT	AVERAGE DAILY SUPPLY OVER 180 DAYS FROM 160 g BOLUS
Iodine	23.0 mg
Cobalt	2.7 mg
Selenium	1.2 mg

## BENEFITS

- Eroding technology means consistent supply of trace elements
- Delivers full daily requirement of iodine, cobalt and selenium
- Free of copper – important for closely managed dairy cows
- Strong healthy calves
- Easier, cleaner calvings
- Optimise conception rates
- Reduced calving spread
- Contains no GMOs or material of animal origin
- Active life 180 days

## ADMINISTRATION

- One 160 g bolus should be given to each animal
- Always use the approved Agrimin cattle bolus applicator A
- Pack size - 10 boluses



# TRACE ELEMENT BOLUSES FOR ADULT CATTLE

## DESCRIPTION

A sustained release bolus containing copper, iodine, cobalt and selenium. Intended for adult cattle on grass or forage based diets with a liveweight over 400 kg.

**24-7 SMARTRACE® PLUS ADULT CATTLE** is designed for situations where iodine, cobalt and selenium supplementation is essential in the run up to calving and service and where additional copper is required.

**24-7 SMARTRACE® PLUS ADULT CATTLE** supplies the animal's full daily requirement of each essential trace element for 180 days.

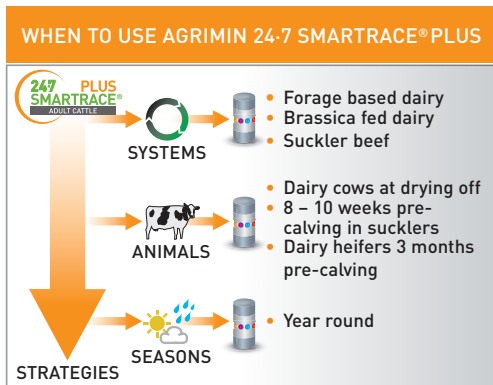
ACTIVE COMPONENT	AVERAGE DAILY SUPPLY OVER 180 DAYS FROM 195 g BOLUS
Copper	140.0 mg
Iodine	23.0 mg
Cobalt	2.7 mg
Selenium	1.2 mg

## BENEFITS

- Eroding technology means consistent supply of trace elements
- Delivers full daily requirement of copper, iodine, cobalt and selenium
- Strong healthy calves
- Easier, cleaner calvings
- Optimise conception rates
- Reduced calving spread
- Contains no GMOs or material of animal origin
- Active life 180 days

## ADMINISTRATION

- One 195 g bolus should be given to each animal
- Always use the approved Agrimin cattle bolus applicator A
- Pack size - 10 boluses



# TRACE ELEMENT BOLUSES FOR LAMBS

## DESCRIPTION

A sustained release bolus specifically designed for lambs, containing iodine, cobalt and selenium. Intended for ruminating lambs with a liveweight over 25 kg.

**24-7 SMARTRACE® LAMB** is designed for situations where iodine, cobalt and selenium supplementation is essential for growing, ruminating lambs to help maintain and maximise growth rates, ensuring strong vital lambs.

**24-7 SMARTRACE® LAMB** supplies the animal's full daily requirement of each essential trace element for 120 days.

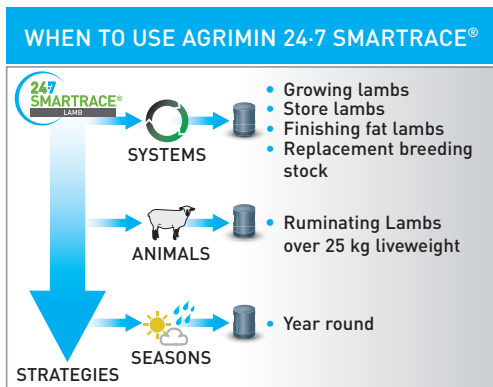
ACTIVE COMPONENT	AVERAGE DAILY SUPPLY OVER 120 DAYS FROM 2 x 6 g BOLUSES
Iodine	0.9 mg
Cobalt	0.8 mg
Selenium	0.2 mg

## BENEFITS

- Eroding technology means consistent supply of trace elements
- Delivers full daily requirement of iodine, cobalt and selenium
- Free of copper – OK for use in continental breeds
- Helps maintain lamb growth from weaning
- Promotes strong healthy lambs
- Contains no GMOs or material of animal origin
- Active life 120 days

## ADMINISTRATION

- **2 x 6 g boluses should be given to each animal**
- **Always use the approved Agrimin lamb bolus applicator C**
- **Pack size - 200 boluses (enough for 100 lambs)**



# TRACE ELEMENT BOLUSES FOR ADULT SHEEP

## DESCRIPTION

A sustained release bolus containing iodine, cobalt and selenium. Intended for adult sheep, gimmers and hogs with a liveweight over 40 kg.

**24-7 SMARTRACE® ADULT SHEEP** is designed for situations where iodine, cobalt and selenium supplementation is essential in the run up to tupping, at scanning or over-wintering. It can also be given to rams in advance of the mating season.

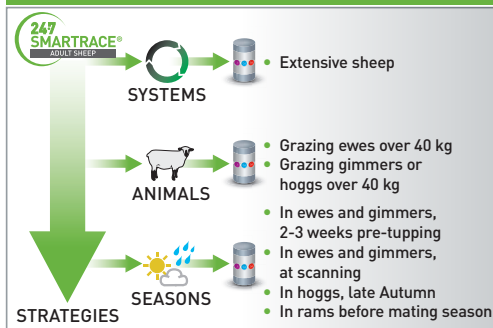
**24-7 SMARTRACE® ADULT SHEEP** supplies the animal's full daily requirement of each essential trace element for 180 days.

ACTIVE COMPONENT	AVERAGE DAILY SUPPLY OVER 180 DAYS FROM 48 g BOLUS
Iodine	4.2 mg
Cobalt	0.8 mg
Selenium	0.4 mg

## BENEFITS

- Eroding technology means consistent supply of trace elements
- Delivers full daily requirement of iodine, cobalt and selenium
- Free of copper – OK for use in continental breeds
- Helps maintain ewe health through winter
- Optimise lambing percentages
- Helps maintain lamb vitality
- Contains no GMOs or material of animal origin
- Active life 180 days

## WHEN TO USE AGRIMIN 24-7 SMARTRACE®



## ADMINISTRATION

- One 48 g bolus should be given to each animal
- Always use the approved Agrimin sheep bolus applicator A
- Pack size - 50 boluses



# TRACE ELEMENT BOLUSES FOR ADULT SHEEP

## DESCRIPTION

A sustained release bolus containing copper, iodine, cobalt and selenium. Intended for adult sheep, gimmers and hogs with a liveweight over 40 kg.

**24·7 SMARTRACE® PLUS ADULT SHEEP** is designed for situations where copper, iodine, selenium and cobalt supplementation is essential in the run up to tupping, at scanning or over-wintering. Can also be given to rams in advance of the mating season. Do not use this product in breeds susceptible to copper toxicity or in sheep that may be housed for prolonged periods and fed concentrates. If in doubt, consult your veterinary surgeon or nutritionist.

**24·7 SMARTRACE® PLUS ADULT SHEEP** supplies the animal's full daily requirement of each essential trace element for 180 days.

ACTIVE COMPONENT	AVERAGE DAILY SUPPLY OVER 180 DAYS FROM 52 g BOLUS
Copper	18.7 mg
Iodine	4.2 mg
Cobalt	0.8 mg
Selenium	0.4 mg

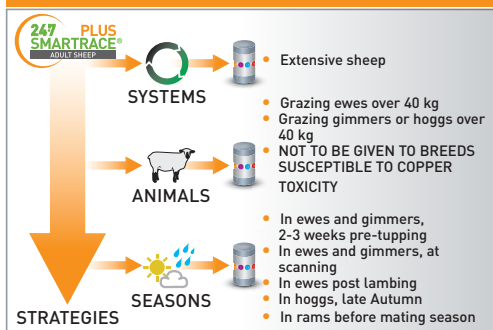
## BENEFITS

- Eroding technology means consistent supply of trace elements
- Delivers full daily requirement of copper, iodine, cobalt and selenium
- Helps maintain ewe health through winter
- Optimise lambing percentages
- Helps maintain lamb vitality
- Contains no GMOs or material of animal origin
- Active life 180 days

## ADMINISTRATION

- One 52 g bolus should be given to each animal
- Always use the approved Agrimin sheep bolus applicator A
- Pack size - 50 boluses

## WHEN TO USE AGRIMIN 24·7 SMARTRACE® PLUS



# TRACE ELEMENT BOLUSES FOR DAIRY COWS

## DESCRIPTION

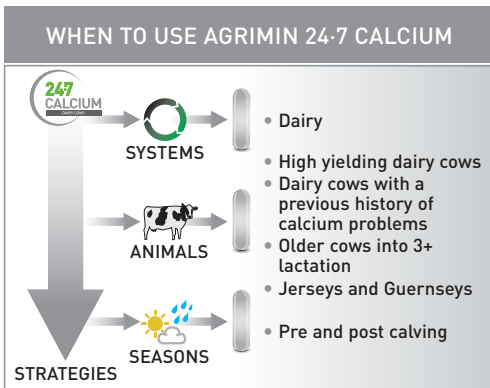
A short term, sustained release bolus containing calcium.

Intended for use in adult dairy cows over 400 kg liveweight, at calving.

ACTIVE COMPONENT	EACH 203 g BOLUS CONTAINS 43 g OF CALCIUM
Calcium Chloride (E509)	56%
Calcium Sulphate (E516)	23%

## BENEFITS

- Large supply of calcium – 43 g in each bolus
- Bolus dissolves and supplies calcium within 50 minutes of administration
- Calcium from bolus available as chloride (fast release) and sulphate (slow release) – peace of mind for the farmer
- None of the palatability problems associated with gels and pastes
- Can be used in conjunction with existing calcium supplementation regime



## ADMINISTRATION

### 1. Pre and post calving regime:

Administer one bolus at the first sign of calving.

Administer a second bolus 12-15 hours after the first bolus.

### 2. Post calving regime:

Administer one bolus immediately after calving (or after sub-cutaneous calcium injection).

Administer a second bolus 12-15 hours after the first bolus.

- Pack size - 12 boluses
- Always use the approved Agrimin cattle bolus applicator C.





# COPPER BOLUSES FOR CATTLE

## DESCRIPTION

A sustained release bolus containing 25 g copper oxide. Intended for growing cattle and breeding cows on grass or forage based diets.

**24·7 COPPER CATTLE** is designed for situations where soil and forage copper levels are low or where known copper antagonists such as molybdenum, iron and sulphur are high.

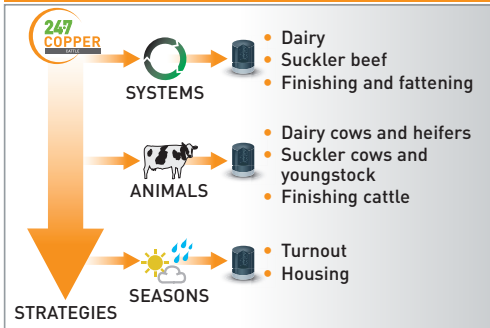
**24·7 COPPER CATTLE** supplies the animal's daily requirement of copper over a period of 180 days.

ACTIVE COMPONENT	EACH BOLUS CONTAINS
<b>Copper</b> (as copper oxide rods)	<b>21 g</b> (25 g copper oxide)

## BENEFITS

- Optimise growth rates in youngstock and finishing animals
- Optimise coat condition
- Easy to administer
- No capsule means no breakages or damage prior to or during administration
- Contains no GMOs or material of animal origin
- Active life 180 days

## WHEN TO USE AGRIMIN 24·7 COPPER



## ADMINISTRATION

- **Ruminating cattle under 250 kg**  
- Administer one bolus
- **Cattle over 250 kg**  
- Administer one or two boluses
- **Always use the approved Agrimin cattle bolus applicator B**
- **Pack size**  
- 24 boluses





# COPPER CAPSULES FOR LAMBS

## DESCRIPTION

**24-7 COPPER LAMB** are long acting capsules for the oral administration of copper to ruminating lambs. Intended for ruminating lambs, with a liveweight over 20 kg, on grass or forage-based diets.

**24-7 COPPER LAMB** is designed for situations where soil and forage copper levels are low or where known copper antagonists such as molybdenum, iron and sulphur are high.

**24-7 COPPER LAMB** capsules are designed to maintain normal copper levels over the whole grazing season (approximately 6 months).

Do not use this product in breeds susceptible to copper toxicity or in lambs that may be housed for prolonged periods and fed concentrates. If in doubt, consult your veterinary surgeon or nutritionist.

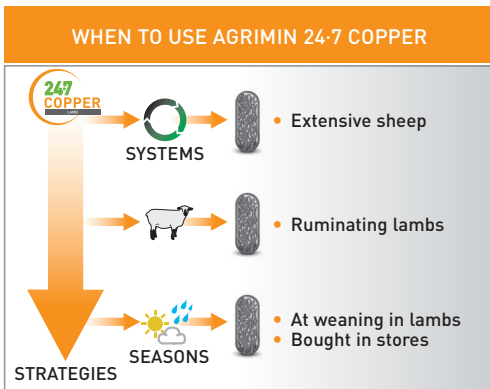
ACTIVE COMPONENT	EACH CAPSULE CONTAINS
<b>Copper</b> (as copper oxide rods)	<b>1.7 g</b> (2 g copper oxide)

## BENEFITS

- Optimise growth rates
- Optimise fleece condition
- Easy to administer
- Active life 180 days

## ADMINISTRATION

- Ruminating lambs over 20 kg - one 2 g capsule
- Always use the approved Agrimin lamb bolus applicator D
- Pack size - 250 capsules





# COPPER CAPSULES FOR SHEEP

## DESCRIPTION

**24-7 COPPER SHEEP** are long acting capsules for the oral administration of copper to sheep. Intended for adult sheep, with a liveweight over 40 kg, on grass or forage based diets.

**24-7 COPPER SHEEP** is designed for situations where soil and forage copper levels are low or where known copper antagonists such as molybdenum, iron and sulphur are high.

**24-7 COPPER SHEEP** capsules are designed to maintain normal copper levels over the whole grazing season (approximately 6 months).

Do not use this product in breeds susceptible to copper toxicity or in sheep that may be housed for prolonged periods and fed concentrates. If in doubt, consult your veterinary surgeon or nutritionist.

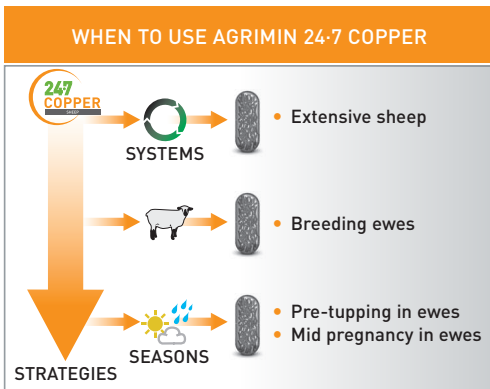
ACTIVE COMPONENT	EACH CAPSULE CONTAINS
<b>Copper</b> (as copper oxide rods)	<b>3.4 g</b> (4 g copper oxide)

## BENEFITS

- Optimise growth rates
- Optimise fleece condition
- Easy to administer
- Active life 180 days

## ADMINISTRATION

- **Adult sheep over 40 kg - one 4 g capsule**
- **Always use the approved Agrimin sheep bolus applicator B**
- **Pack size - 250 capsules**



# ANTIOXIDANT BOLUSES FOR ADULT CATTLE

## DESCRIPTION

A sustained release antioxidant bolus containing a combination of vitamin E, selenium and grape extract. Intended for adult cattle on grass or forage-based diets with a liveweight over 400 kg.

**Esey BREEDER ADULT CATTLE** is designed to support antioxidant levels during the transition period when the cow is under stress and when vitamin E levels fall at calving.

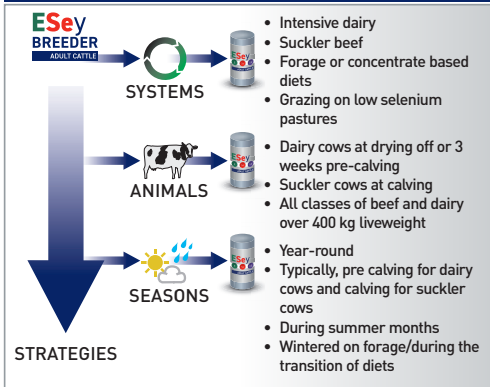
**Esey BREEDER ADULT CATTLE** supplies the animal's full daily requirement of each nutrient for approximately 60 days.

ACTIVE COMPONENT	AVERAGE DAILY SUPPLY OVER 60 DAYS FROM 123 g BOLUS
Vitamin E	63 mg
Selenium	3 mg
Grape Extract	41 mg

## BENEFITS

- Eroding technology means consistent supply of nutrients
- Vitamin E and selenium combined with the grape extract provide the recommended antioxidant levels.
- Optimise colostrum quality
- Optimise calving intervals
- Easier, cleaner calvings
- Reduce the risk of metritis and mastitis
- Optimise reproductive performance
- Optimise immune status
- Bolus applied in one single, simple application
- Active life approximately 60 days

## WHEN TO USE AGRIMIN Esey BREEDER



## ADMINISTRATION

- One 123 g bolus should be given to each animal
- Always use the approved Agrimin cattle bolus applicator A
- Pack size - 10 boluses



# ANTIOXIDANT BOLUSES FOR ADULT CATTLE

## DESCRIPTION

A sustained release antioxidant bolus containing a combination of vitamin E, selenium and grape extract. Intended for adult cattle on grass or forage-based diets with a liveweight over 400 kg.

**ESeY FINISHER ADULT CATTLE** is designed to support antioxidant levels prior to slaughter to optimise liveweight gain and meat quality or when the animal is under stress.

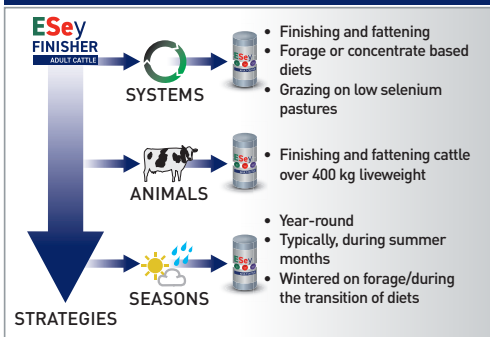
**ESeY FINISHER ADULT CATTLE** supplies the animal's full daily requirement of each nutrient for approximately 60 days.

ACTIVE COMPONENT	AVERAGE DAILY SUPPLY OVER 60 DAYS FROM 123 g BOLUS
Vitamin E	63 mg
Selenium	3 mg
Grape Extract	41 mg

## BENEFITS

- Eroding technology means consistent supply of nutrients
- Vitamin E and selenium combined with the grape extract provide the recommended antioxidant levels
- Optimise immune status
- Optimise liveweight gain
- Optimise meat quality
- Bolus applied in one single, simple application
- Active life approximately 60 days

## WHEN TO USE AGRIMIN ESeY FINISHER



## ADMINISTRATION

- One 123 g bolus should be given to each animal
- Always use the approved Agrimin cattle bolus applicator A
- Pack size - 10 boluses



# TRACE ELEMENT BOLUSES FOR CATTLE

## DESCRIPTION

A sustained release bolus containing 6 trace elements and 3 vitamins. Designed for grazing or forage fed livestock with a liveweight over 150 kg.

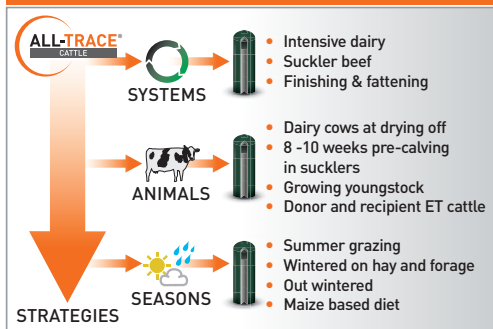
**ALL-TRACE® CATTLE** helps farmers manage the trace element status of their herd over critical periods of the production cycle.

ACTIVE COMPONENT	AVERAGE DAILY SUPPLY OVER 240 DAYS FROM 2 BOLUSES
Copper	136.0 mg
Cobalt	2.0 mg
Iodine	4.4 mg
Manganese	70.5 mg
Selenium	2.1 mg
Zinc	114.1 mg
Vitamin A	3,725.0 IU
Vitamin D <sub>3</sub>	745.0 IU
Vitamin E	6.4 IU

## BENEFITS

- Optimise growth rates in youngstock
- Easier, cleaner calvings
- Strong healthy calves
- Reduced calving spread
- Optimise conception rates
- Optimise general condition
- Both boluses applied in one single, simple application
- Full range of trace elements
- Active life 240 days

## MANAGING THE TRACE ELEMENT STATUS OF THE HERD OVER CRITICAL PERIODS OF THE PRODUCTION CYCLE



## ADMINISTRATION

- **Administer 2 boluses per animal (over 150 kg)**
- **Always use the approved Agrimin cattle bolus applicator A**
- **Pack size - 20 boluses**



# TRACE ELEMENT BOLUSES FOR CATTLE

## DESCRIPTION

A sustained release bolus containing 6 trace elements and 3 vitamins. Designed for grazing or forage fed livestock with a liveweight over 150 kg where an imbalance of iodine affects animal productivity.

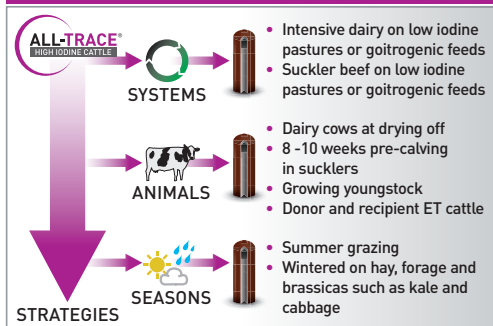
**ALL-TRACE® HIGH IODINE CATTLE** helps farmers manage the trace element status of their herd over critical periods of the production cycle.

ACTIVE COMPONENT	AVERAGE DAILY SUPPLY OVER 180 DAYS FROM 2 BOLUSES
Copper	175.1 mg
Cobalt	2.6 mg
<b>IODINE</b>	<b>19.2 mg</b>
Manganese	90.7 mg
Selenium	2.7 mg
Zinc	147.0 mg
Vitamin A	4,780.0 IU
Vitamin D <sub>3</sub>	956.0 IU
Vitamin E	8.2 IU

## BENEFITS

- Optimise growth rates in youngstock
- Easier, cleaner calvings
- Strong healthy calves
- Reduced calving spread
- Optimise conception rates
- Optimise general condition
- Both boluses applied in one single, simple application
- Full range of trace elements
- Active life 180 days

## MANAGING THE TRACE ELEMENT STATUS OF THE HERD OVER CRITICAL PERIODS OF THE PRODUCTION CYCLE



## ADMINISTRATION

- **Administer 2 boluses per animal (over 150 kg)**
- **Always use the approved Agrimin cattle bolus applicator A**
- **Pack size - 20 boluses**



# TRACE ELEMENT BOLUSES FOR CATTLE

## DESCRIPTION

**ALL-TRACE® DRY COW** is a sustained release bolus containing 6 trace elements and 3 vitamins specifically formulated for the transition period.

ACTIVE COMPONENT	AVERAGE DAILY SUPPLY OVER 120 DAYS FROM 2 BOLUSES
Copper	96.9 mg
Cobalt	4.0 mg
Iodine	17.6 mg
Manganese	153.1 mg
Selenium	2.3 mg
Zinc	257.9 mg
Vitamin A	7,559.0 IU
Vitamin D <sub>3</sub>	1,512.0 IU
Vitamin E	19.5 IU

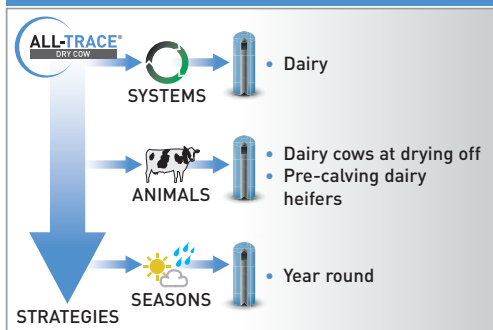
## BENEFITS

- Easier, cleaner calvings
- Strong, healthy calves
- Reduced calving spread
- Optimise conception rates
- Optimise general condition
- Both boluses applied in one single, simple application
- Cows can be given boluses at the same time as drying off routines such as hoof trimming and intramammary tubing
- Active life 120 days

## ADMINISTRATION

- **Administer 2 boluses per animal (over 400 kg)**
- **Always use the approved Agrimin cattle bolus applicator A**
- **Pack size - 20 boluses**

### MANAGING THE TRACE ELEMENT STATUS OF THE HERD OVER CRITICAL PERIODS OF THE PRODUCTION CYCLE





# TRACE ELEMENT BOLUSES FOR ORGANIC CATTLE

## DESCRIPTION

A sustained release bolus containing 6 trace elements. **ALL-TRACE<sup>®</sup> ORGANIC CATTLE** is approved by the Organic Farmers and Growers Association and is compliant with current EC standards.

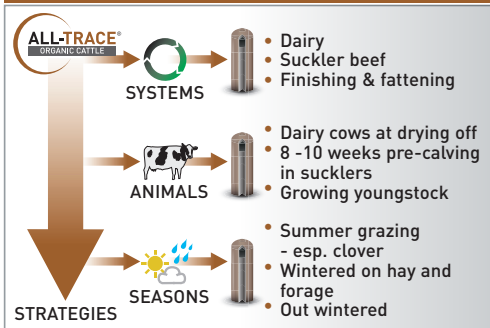
Designed for organically reared, grazing or forage fed livestock with a liveweight over 150 kg.

ACTIVE COMPONENT	AVERAGE DAILY SUPPLY OVER 180 DAYS FROM 2 BOLUSES
Copper	195.2 mg
Cobalt	2.9 mg
Iodine	6.3 mg
Manganese	101.1 mg
Selenium	3.0 mg
Zinc	163.8 mg

## BENEFITS

- Approved by Organic Farmers & Growers
- Contains no GMOs or material of animal origin
- Optimise growth rates in youngstock
- Easier, cleaner calvings
- Strong healthy calves
- Reduced calving spread
- Optimise conception rates
- Optimise general condition
- Both boluses applied in one single, simple application
- Active life 180 days

### MANAGING THE TRACE ELEMENT STATUS OF THE HERD OVER CRITICAL PERIODS OF THE PRODUCTION CYCLE



## ADMINISTRATION

- Administer 2 boluses per animal (over 150 kg)
- Always use the approved Agrimin cattle bolus applicator A
- Pack size - 20 boluses



# TRACE ELEMENT BOLUSES FOR CATTLE

## DESCRIPTION

In-vivo dissolution studies have shown that **ALL-TRACE® BIOTIN GOLD CATTLE** delivers the target level of 20 mg per head per day of biotin over 120 days. Not only this, **ALL-TRACE® BIOTIN GOLD CATTLE** will also deliver the full daily requirement of copper, cobalt, selenium and iodine and useful contributions of zinc, manganese and vitamins A, D<sup>3</sup> and E. Designed for grazing or forage fed dairy cows and heifers with a liveweight over 400 kg.

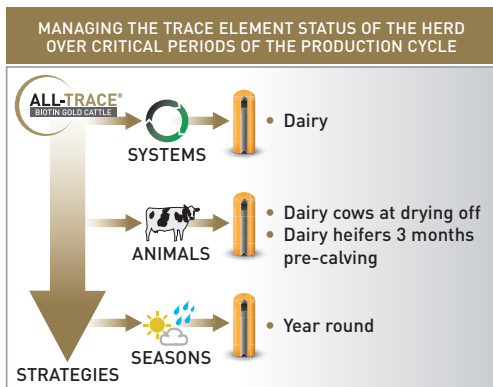
ACTIVE COMPONENT	AVERAGE DAILY SUPPLY OVER 120 DAYS FROM 2 BOLUSES
<b>BIOTIN</b>	<b>19.3 mg</b>
<b>Copper</b>	<b>96.9 mg</b>
<b>Cobalt</b>	<b>4.0 mg</b>
<b>Iodine</b>	<b>17.6 mg</b>
<b>Manganese</b>	<b>153.1 mg</b>
<b>Selenium</b>	<b>2.4 mg</b>
<b>Zinc</b>	<b>257.7 mg</b>
<b>Vitamin A</b>	<b>7,553.0 IU</b>
<b>Vitamin D<sub>3</sub></b>	<b>1,511.0 IU</b>
<b>Vitamin E</b>	<b>19.5 IU</b>

## BENEFITS

- Delivers a target level of 20 mg per head per day of Biotin over 120 days
- Promotes hoof and horn strength
- Easier, cleaner calvings
- Strong healthy calves
- Reduced calving spread
- Optimise conception rates
- Optimise general condition
- Both boluses applied in one single, simple application
- Active life 120 days

## ADMINISTRATION

- Administer **2 boluses per animal (over 400 kg)**
- Always use the approved Agrimin cattle bolus applicator A
- Pack size - 20 boluses



# MAGNESIUM BULLETS FOR CATTLE AND SHEEP

## DESCRIPTION

A sustained release bolus containing an alloy of magnesium, copper and aluminium. Licensed to aid the prevention of hypomagnesaemia in cattle, sheep and calves grazing rapidly growing spring grass. **RUMBUL** helps farmers manage the magnesium status of their herd or flock over high risk periods.

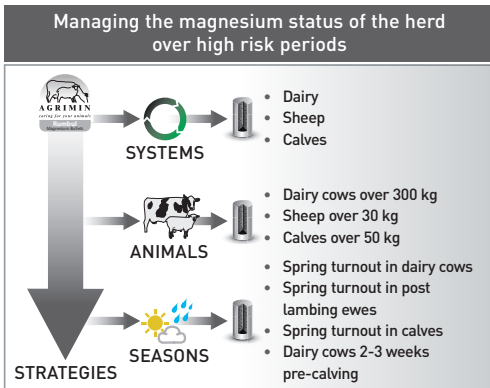
PRODUCT	ACTIVE LIFE	ADMINISTRATION
RUMBUL MAGNESIUM CATTLE	28 DAYS	2 BULLETS
RUMBUL MAGNESIUM SHEEP	21 DAYS	1 BULLET
RUMBUL MAGNESIUM CALVES	21 DAYS	2 BULLETS

## BENEFITS

- POM-VPS licensed as an aid to the prevention of hypomagnesaemia in cattle, sheep and calves
- Certain supply of magnesium during high risk period
- Use pre calving to help boost magnesium intake
- Active life:  
Cattle - 28 days
- Active life: Sheep/  
Calves - 21 days

## ADMINISTRATION

- Dairy cows over 300 kg liveweight
- Sheep over 30 kg liveweight
- Calves over 50 kg liveweight
- Always use the approved Agrimin cattle bolus applicator A on Rumbul Cattle, B on Rumbul Calves and sheep bolus applicator A on Rumbul Sheep
- Pack size:  
Cattle - 10 bullets
- Pack size: Sheep/  
Calves - 20 bullets



# BOLUS APPLICATOR IDENTIFICATION



## 3 YEAR GUARANTEE

We offer a 3 year guarantee for all our in-house designed and built applicators. Details of the guarantee will be supplied with every applicator sold.

### AGRIMIN CATTLE BOLUS APPLICATOR A

USE WITH:

- 24·7 SMARTRACE® GROWING CATTLE
- 24·7 SMARTRACE® PLUS GROWING CATTLE
- 24·7 SMARTRACE® ADULT CATTLE
- 24·7 SMARTRACE® PLUS ADULT CATTLE
- Esey BREEDER CATTLE
- Esey FINISHER CATTLE
- ALL-TRACE® CATTLE
- ALL-TRACE® HIGH IODINE
- ALL-TRACE® DRY COW
- ALL-TRACE® ORGANIC
- ALL-TRACE® BIOTIN GOLD
- RUMBUL CATTLE



Cup A

### AGRIMIN CATTLE BOLUS APPLICATOR B

USE WITH:

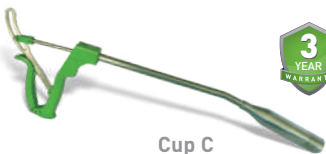
- 24·7 SMARTRACE® PLUS CALF
- 24·7 COPPER CATTLE
- RUMBUL CALVES



### AGRIMIN CATTLE BOLUS APPLICATOR C

USE WITH:

- 24·7 CALCIUM DAIRY COWS



Cup C

Please note: Cups A and C are interchangeable.

Care should always be taken when bolusing. ALWAYS refer to the applicator instructions provided. If unsure contact Agrimin for further guidance.

## AGRIMIN SHEEP BOLUS APPLICATOR A

USE WITH:

- 24·7 SMARTRACE® ADULT SHEEP
- 24·7 SMARTRACE® PLUS ADULT SHEEP
- RUMBUL SHEEP



Cup A

## AGRIMIN SHEEP BOLUS APPLICATOR B

USE WITH:

- 24·7 COPPER SHEEP



Cup B

## AGRIMIN LAMB BOLUS APPLICATOR C

USE WITH:

- 24·7 SMARTRACE® LAMB



Cup C

Please note the screw on adaptor heads/cups are interchangeable, allowing for one Sheep/Lamb Bolus Applicator to be used for all of Agrimin's Sheep and Lamb product range.

## AGRIMIN LAMB BOLUS APPLICATOR D

USE WITH:

- 24·7 COPPER LAMB



Care should always be taken when bolusing.  
ALWAYS refer to the applicator instructions provided.  
If unsure contact Agrimin for further guidance.

# TRIAL DATA

All of our boluses have been rigorously researched and then tested under practical farming conditions in a number of different countries. In most cases, the trials have been conducted independently and the results published in peer reviewed journals.



## CANADA

Maintaining copper levels in cattle bolused with ALL-TRACE® and grazing high molybdenum pasture.



## SCOTLAND

Lower somatic cell counts in cows given ALL-TRACE® at drying off.



## IRELAND

Copper and selenium responses in groups of beef cattle given ALL-TRACE® at grass.



## MEXICO

Reduced still births and retained placentas in dry cows given ALL-TRACE®.



## NEW ZEALAND

Blood and liver copper and selenium responses in cattle given 24·7 SMARTRACE® PLUS boluses.

These trial results help prove the quality and efficacy of our product range and are available to anyone - please contact us for details or look at our website:  
[www.agrimin.co.uk](http://www.agrimin.co.uk)



#### **BELARUS**

Enhanced immune response in dairy cows given ALL-TRACE® boluses.



#### **NETHERLANDS**

Enhanced conception rates in heifers and cows given ALL-TRACE® in trial across 60 dairy farms. Reduced retained placenta in bolused groups.



#### **WALES / CYMRU**

Lambing percentage increase in ewes given 24·7 SMARTRACE® SHEEP boluses.



#### **ENGLAND**

Lambing percentage response in breeding ewes given 24·7 SMARTRACE® SHEEP boluses.



#### **AZORES**

Weight gain response in youngstock given ALL-TRACE® boluses at grass.



#### **AUSTRALIA**

Copper and selenium responses in groups of beef cattle given ALL-TRACE® at grass.

# AGRIMIN SALES TEAM

## DAVID BELL

**Scottish Sales Manager**

T: 07702 802126

E: dbell@agrimin.co.uk

## HEIDI PLATTS

**Northern England Sales Manager**

T: 07889 116355

E: hplatts@agrimin.co.uk

## OLIVIA PARKIN

**Central and Eastern  
England Sales Manager**

T: (Office) 01652 688063

T: 07702 802993

E: oparkin@agrimin.co.uk

## IEUAN DAVIES

**Wales & Southern England  
Sales Manager**

T: 07753 498001

E: idavies@agrimin.co.uk

## LAUREN ARNDT

**Wales & Southern England  
Business Development Manager**

T: 07850 796115

E: larndt@agrimin.co.uk



# INDEX

INTRODUCTION	2
BOLUS TECHNOLOGY	3
THE BENEFITS OF BOLUSES	3
<b>AGRIMIN PRODUCTS</b>	
24·7 SMARTRACE® PLUS CALF	4
24·7 SMARTRACE® GROWING CATTLE	5
24·7 SMARTRACE® PLUS GROWING CATTLE	6
24·7 SMARTRACE® ADULT CATTLE	7
24·7 SMARTRACE® PLUS ADULT CATTLE	8
24·7 SMARTRACE® LAMB	9
24·7 SMARTRACE® ADULT SHEEP	10
24·7 SMARTRACE® PLUS ADULT SHEEP	11
24·7 CALCIUM DAIRY COWS	12
24·7 COPPER CATTLE	13
24·7 COPPER LAMB	14
24·7 COPPER SHEEP	15
Esey BREEDER	16
Esey FINISHER	17
ALL-TRACE® CATTLE	18
ALL-TRACE® HIGH IODINE CATTLE	19
ALL-TRACE® DRY COW	20
ALL-TRACE® ORGANIC CATTLE	21
ALL-TRACE® BIOTIN GOLD CATTLE	22
RUMBUL CATTLE & SHEEP	23
<b>INFORMATION</b>	
BOLUS APPLICATOR IDENTIFICATION	24
TRIAL DATA	26
AGRIMIN SALES TEAM	28



CONTROLLED AND SUSTAINED  
RELEASE BOLUS TECHNOLOGY FOR  
**CATTLE AND SHEEP**

**AGRIMIN LTD.**

Arlanda Way,  
Humberside Airport,  
Kirmington,  
North Lincolnshire,  
DN39 6YH,  
UK

**T:** +44 (0) 1652 688046

**F:** +44 (0) 1652 688049

**E:** info@agrimin.co.uk

